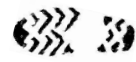




Islay Natural History Trust

2017 Sunday Nature Walks (rAmbles) - 2pm



1.5-2hours of guided expertise in the field - identifying plants, birds, butterflies, geology, fungi and all manner of wildlife delights

June		Meeting point
4th Village	ON YOUR DOORSTEP: <u>Around the Ard - Port Ellen</u> 1.5 hr gentle meander around the promontory S. of Frederick Crescent - What floral delights in early June?	Meet Opposite the Co-op on the green
11th Seashore	<u>Gartbreck: Super Seashore Bonanza:</u> 2hr rAmble with seaweeds, seals, flowers, waders and seashells	Meet at parking area at end of track by Gartbreck Farm.
18th Dunes	<u>Sanaigmore - Dune Delights.</u> 1.5hr rAmble through the dunes for flowers and coastal birds	By Outback Art Gallery
25th Geology	<u>Saligo - Geology uncovered</u> with David Webster - Islay's fascinating geology explained. 2 hr rAmble	Saligo gate, Nr Loch Gorm Please park responsibly
July		
2nd Dunes	<u>Killinallan: Floral wonders and orchid delights -</u> 2hr rAmble through the dunes for an amazing floral display with orchids & butterflies.	Killinallan gate - road end east side Loch Gruinart
9th Geology	<u>Geology on The Oa - Faults & folds, deserts & glaciers, with spectacular coastal scenery.</u>	RSPB Oa - American Monument car park
16th Village	ON YOUR DOORSTEP: <u>Port Mor, Port Charlotte -</u> gentle meander around the playing fields a host of habitats, plants and insects	Port Mor car park, Port Charlotte
23rd Fungi	<u>Summer Fungi Foray: Bridgend Woods by Loch Skerrols.</u> Fungi is not just an Autumn event!	Loch Skerrols, Bridgend, off main road north of Bridgend woods car park
30th Dunes	<u>Sea holly, rolling waves and heathland - Currie Sands, nr Portnahaven.</u> 1.5hr rAmble	Claddach - Currie Sands parking area just north of Portnahaven
August		
6th Dunes	<u>Floral dune delights - Killinallan</u> 2hr rAmble to see the later flowering patchwork of colour	Killinallan gate - road end east side Loch Gruinart
13th Village	ON MY DOORSTEP: <u>The Battery, Bowmore -</u> heather, grassland and shoreline treasures	Outside Tourist Office, Bowmore
20th	Kilchoman Gala day at Port Mor campsite - No walk - Visit our stall instead!	
27th Geology	Geology (Port Ellen) - A tale of two oceans, underwater volcanoes and whisky on the rocks	Opposite Co-op, Port Ellen
September		
3rd Birds	<u>Feathered Friends of Loch Indaal:</u> A look along the shore and saltmarsh for birds on shore and off shore	Parking area east of burn at Black Rock
10th Seashore	ON YOUR DOORSTEP: <u>Seaweeds and seashore foraging - Portnahaven</u>	By bus stop/toilets, Portnahaven
17th Fungi	<u>Autumn Fungi Foray: Bridgend Woods by Loch Skerrols</u> Toadstools and Brackets of autumn!	Loch Skerrols, Bridgend, off main road north of Bridgend woods car park
24th Seashore	<u>Rockpools for Adults - Port Mor:</u> Crabs, Sea Snails and Seaweeds - why should the kids have all the fun!	Port Mor Car Park, Port Charlotte
rAmble - gentle stroll over short distance <2Km. Sorry No dogs.		
Charge for walks: £5 Adults; £10 Family; INHT members £2		

